

MOBIS

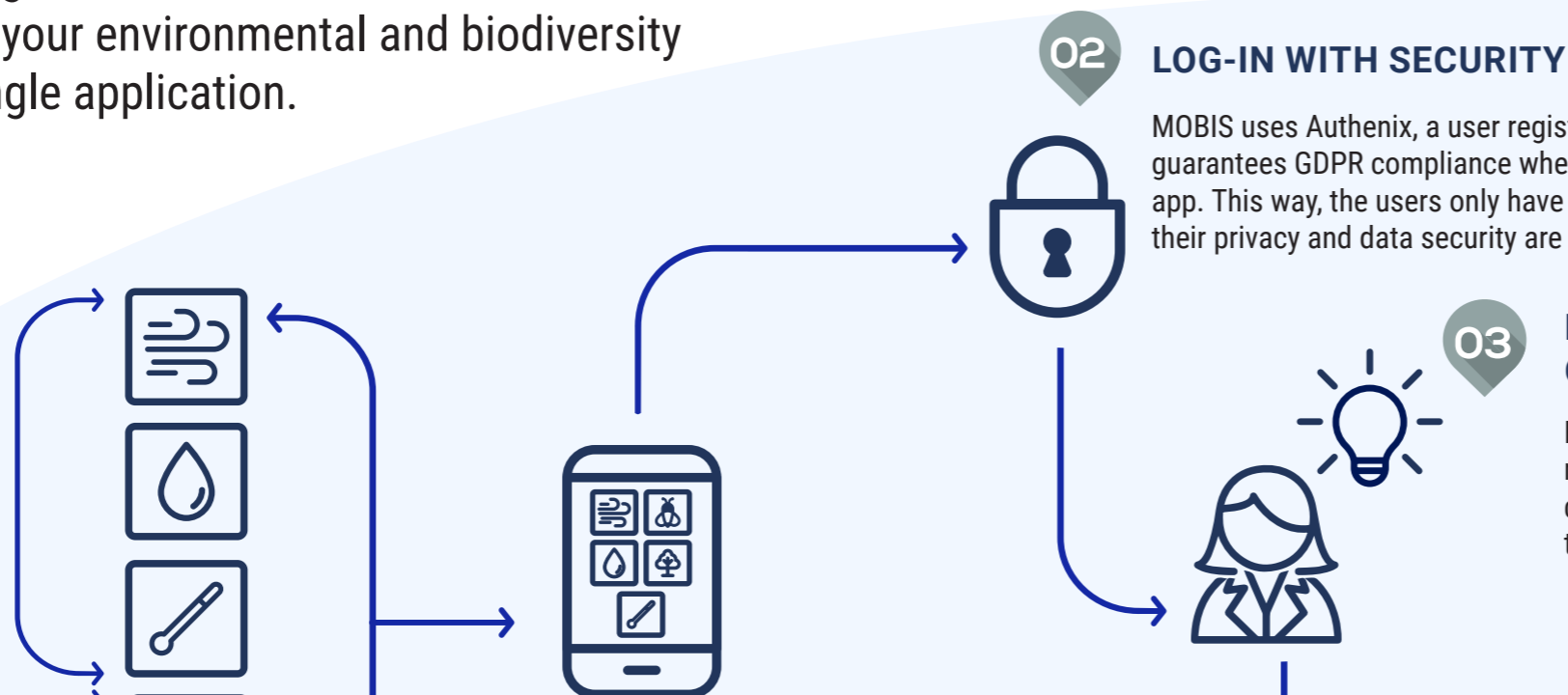
MOBILE OBSERVATION INTEGRATION SERVICE

Why should you use MOBIS?

A service to create integrative citizen science mobile applications: report all your environmental and biodiversity observations in one single application.

ENVIRONMENTAL SENSORS

CITIZEN SCIENCE BIODIVERSITY APPS



01 BUILD AN APP TO INTEGRATE DIVERSE ENVIRONMENTAL AND BIODIVERSITY DATA

MOBIS will share its code with the developers' community to make it possible to create new citizen science apps that integrate data from various environmental sensors and biodiversity platforms in one single Android or iOS app.

02 LOG-IN WITH SECURITY

MOBIS uses Authenix, a user registration service that guarantees GDPR compliance when logging into the app. This way, the users only have to log in once and their privacy and data security are always respected.

03 PERSONALIZE YOUR CITIZEN SCIENCE APP

For example, a developer or a researcher interested in measuring water quality and getting a measurement of air quality as an experiment, will be able to build an app to collect these data instead of using different apps.

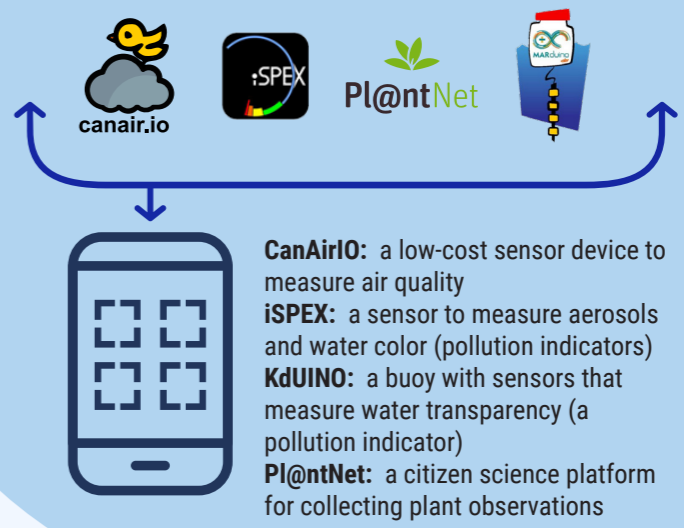
SAVE USERS' TIME

Anyone interested in developing a citizen science app could use MOBIS to make possible that their community:

1. Log in just once
2. Choose which environmental or biodiversity data they would like to report
3. Store their observations (air, water, images) and upload them later.

Cos4Cloud SENSORS INTEGRATION: A REAL CASE

MOBIS will facilitate the integration of the Cos4Cloud sensors in an app so that citizen scientists can upload and collect all data in one place. Eventually, it will also include Pl@ntNet data storage.



- CanAirIO:** a low-cost sensor device to measure air quality
- iSPEX:** a sensor to measure aerosols and water color (pollution indicators)
- KdUINO:** a buoy with sensors that measure water transparency (a pollution indicator)
- Pl@ntNet:** a citizen science platform for collecting plant observations